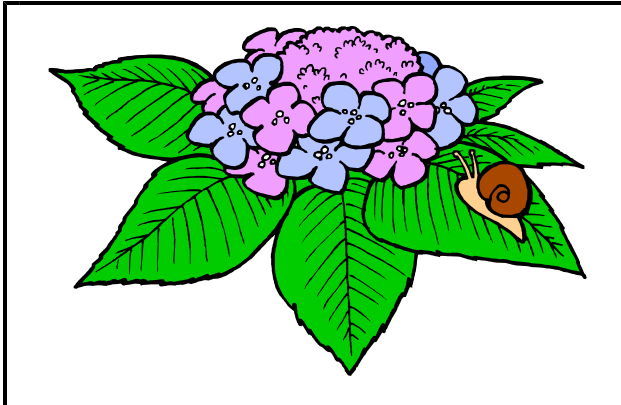
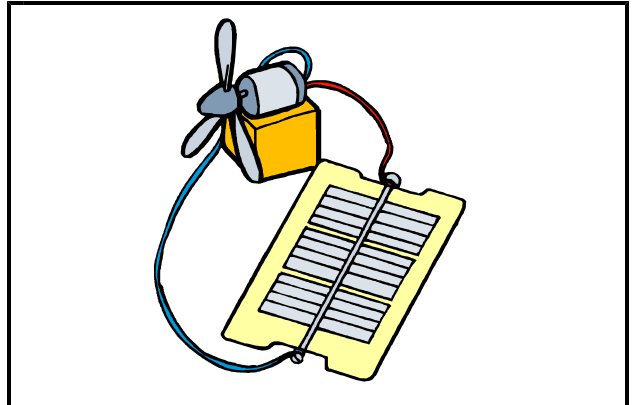


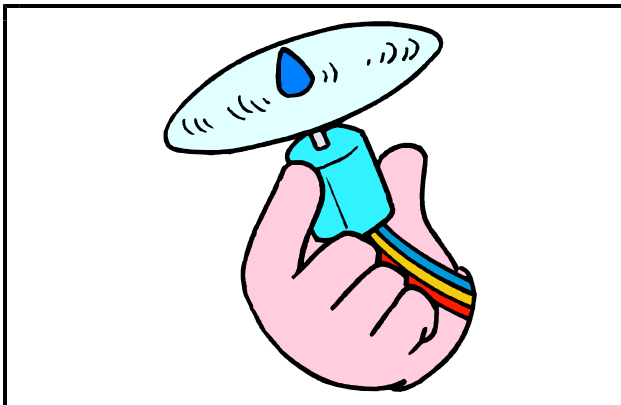
じゅぎょうにでてくることば 1 (理科4年)



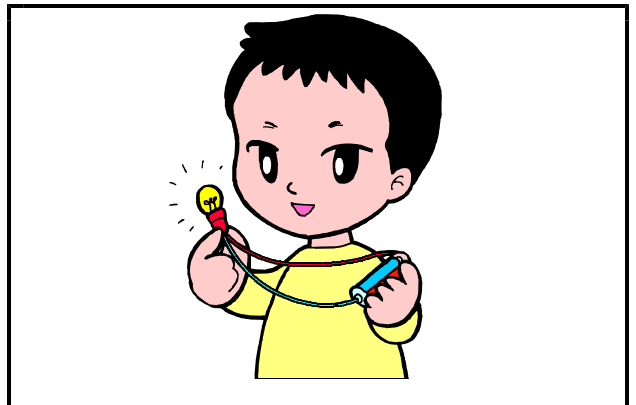
A estação chuvosa La estación lluviosa



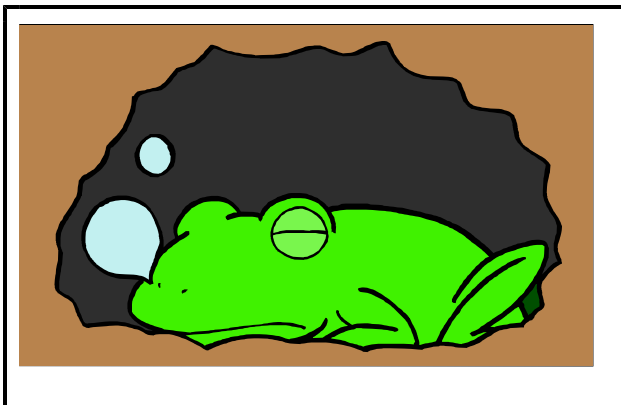
Uma bateria óptica Una batería óptica



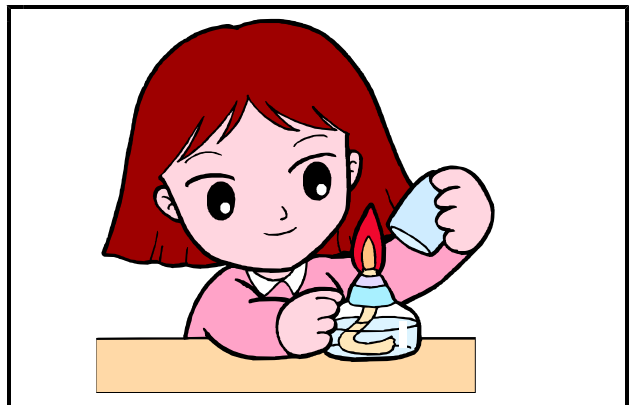
Motor Motor



Bombilla en miniatura

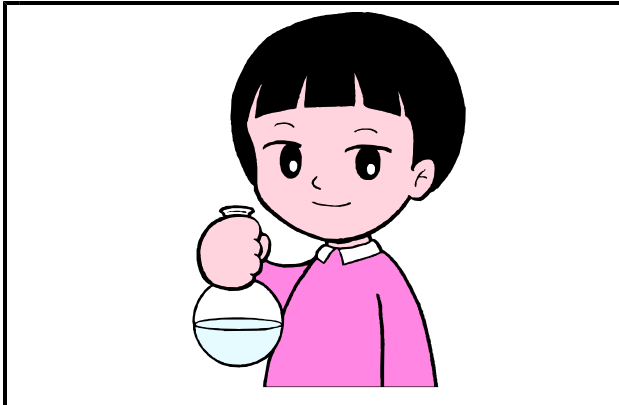


Hibernação Hibernación



Abajur de álcool Lámpara de alcohol

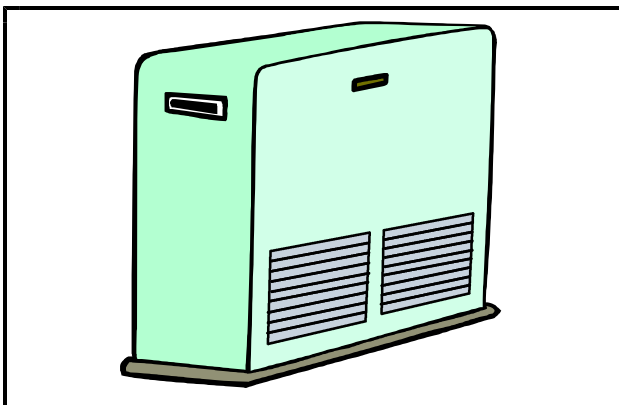
じゅぎょうにでてくることば 2 (理科4年)



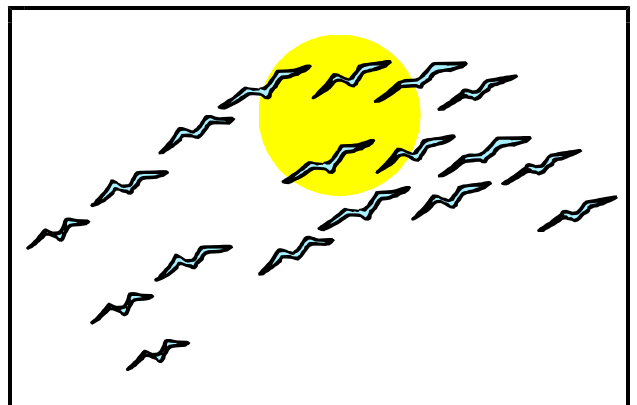
Frasco em forma de círculo
Círculo matraz inferior



Gelando Hielo



Aquecedor Calentador



Pássaro migratório Ave migratoria